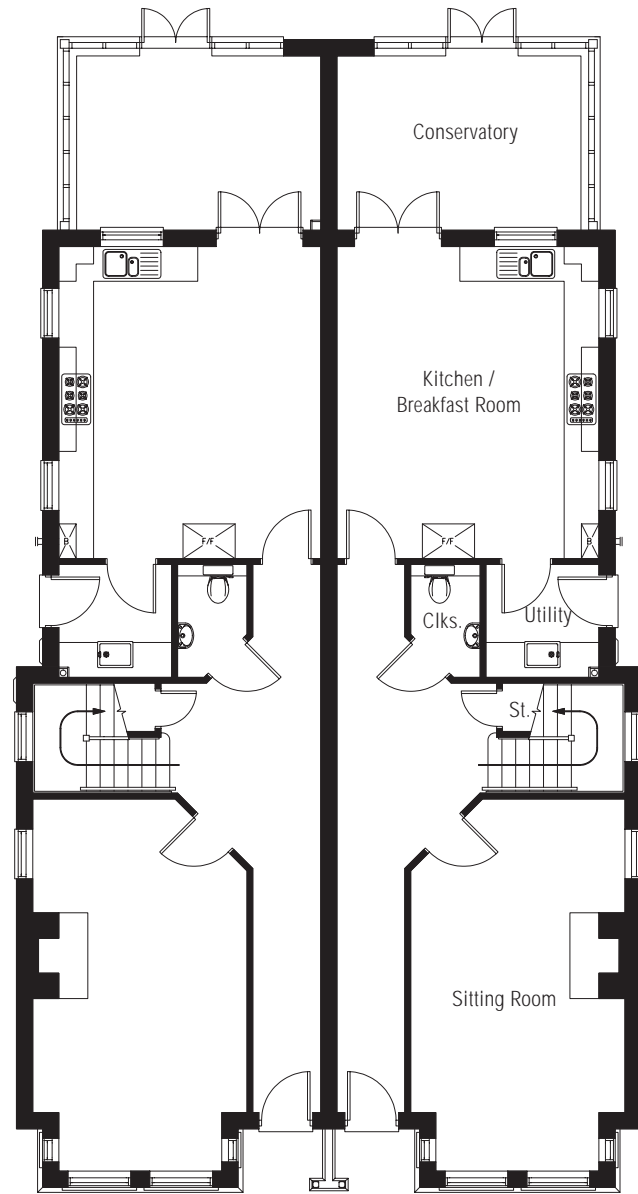
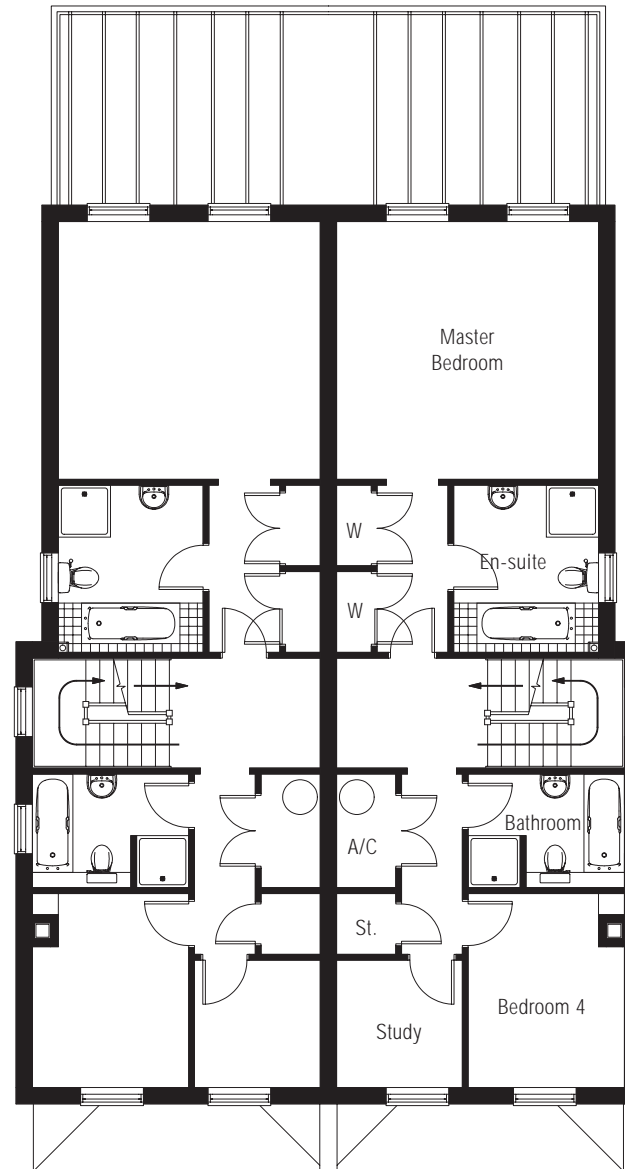


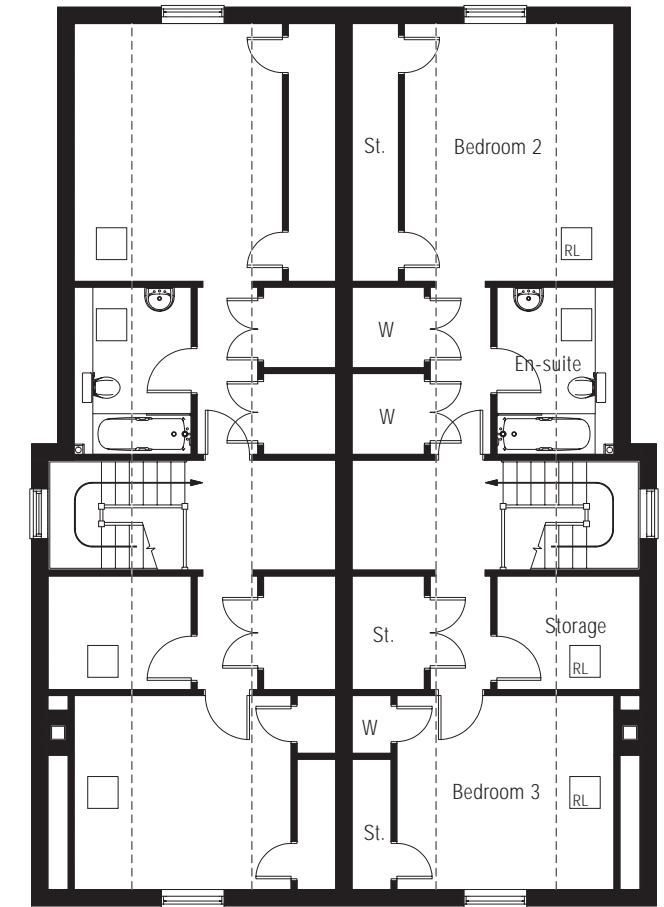
4 bedroom 3 storey houses



ground floor



first floor



second floor*

Sitting Room	3.70m x 6.40m	12' 2" x 21' max
Breakfast/Kitchen	4.50m x 5.35m	14' 9" x 17' 7"
Conservatory	4.20m x 3.00m	13' 9" x 9' 10"
Utility	1.95m x 1.95m	6' 5" x 6' 5"

Master Bedroom	4.50m x 4.45m	14' 9" x 14' 7"
Bedroom 4	2.70m x 3.35m	8' 10" x 11' max
Study/Bedroom 5	2.17m x 2.20m	7' 1" x 7' 2"

Bedroom 2	3.60m x 4.45m	11' 9" x 14' 7"
Bedroom 3	3.75m x 3.35m	12' 3" x 11'
Storage \ Laundry room \ Optional extra shower room	2.47m x 1.96m	8' 1" x 6' 5"

*Skelling heights vary between houses.
Please ask sales agent for details